



INSTRUCTION BULLETIN

No. 340088
Machine: 800/810
Published: 11-97/00
System: SWEEPING

NOTE: DO NOT DISCARD the Parts List from the Instruction Bulletin. Place the Parts List in the appropriate place in your machine manual for future reference. Retaining the Parts List will make it easier to reorder individual parts and will save you the cost of ordering an entire kit.

NOTE: Numbers in parenthesis () are reference numbers for parts listed in Bill of Materials.

Installation Instructions for Kit number 375574

SYNOPSIS / PROBLEM:

This kit contains the parts needed to install a new hopper rollout switch in a new location on the model 800/810 sweeper.

Please follow step-by-step instructions.

SPECIAL TOOLS / CONSIDERATIONS: Hand drill, .218 inch drill bit

(Estimated time to complete: 2 hours)

INSTALLATION:

(Refer to FIG. 1 and 2)

1. Raise the hopper and engage the prop arm.

FOR SAFETY: Before leaving or servicing machine, stop on level surface and set parking brake. Then turn off machine and remove key.

2. Locate the existing hopper rollout switch on the left hand side of the machines hopper lift arm tower. Remove the switch and retain the mounting hardware. (Refer to FIG. 1)
3. Disconnect the rollout switch from the main harness. Remove the switch from the machine. (Refer to FIG. 1)
4. Connect the new harness (3) into the main harness at the point where the old switch was connected.
5. Route the new harness (3) along the with the hydraulic hose leading down the left side lift arm. Use the cable ties (9) to secure the new harness (3) to the hydraulic hoses. Also, use the cable tie mounts (8) and cables ties (9) to secure the new harness to the left side tower. Route the harness to the area of the new switch mounting location. (Refer to FIG. 1)
6. Lower the hopper.
7. Use the dimensions in FIG. 1 to mark and drill the two switch bracket mount holes in the LH hopper side panel. (Refer to FIG. 2)
8. Start the machine and roll out the hopper about half way. Shut off the machine.
9. Install the switch mount bracket (2) on the inside of the LH hopper side panel using the two screws (4), washers (7), and two nuts (5). Hand tighten the hardware. (Refer to FIG. 2)

10. Install the new switch (1) onto the new mount bracket (2) using the hardware removed in step 2. Hand tighten the hardware. (Refer to FIG. 2)
11. Connect the new harness (3) to the new switch (1). Make sure the harness is secured properly along the lift arm using the cable ties (9).
12. Start the machine and roll the hopper back into place. Check and make sure the vacuum fan starts and stops when the hopper is raised and lowered.

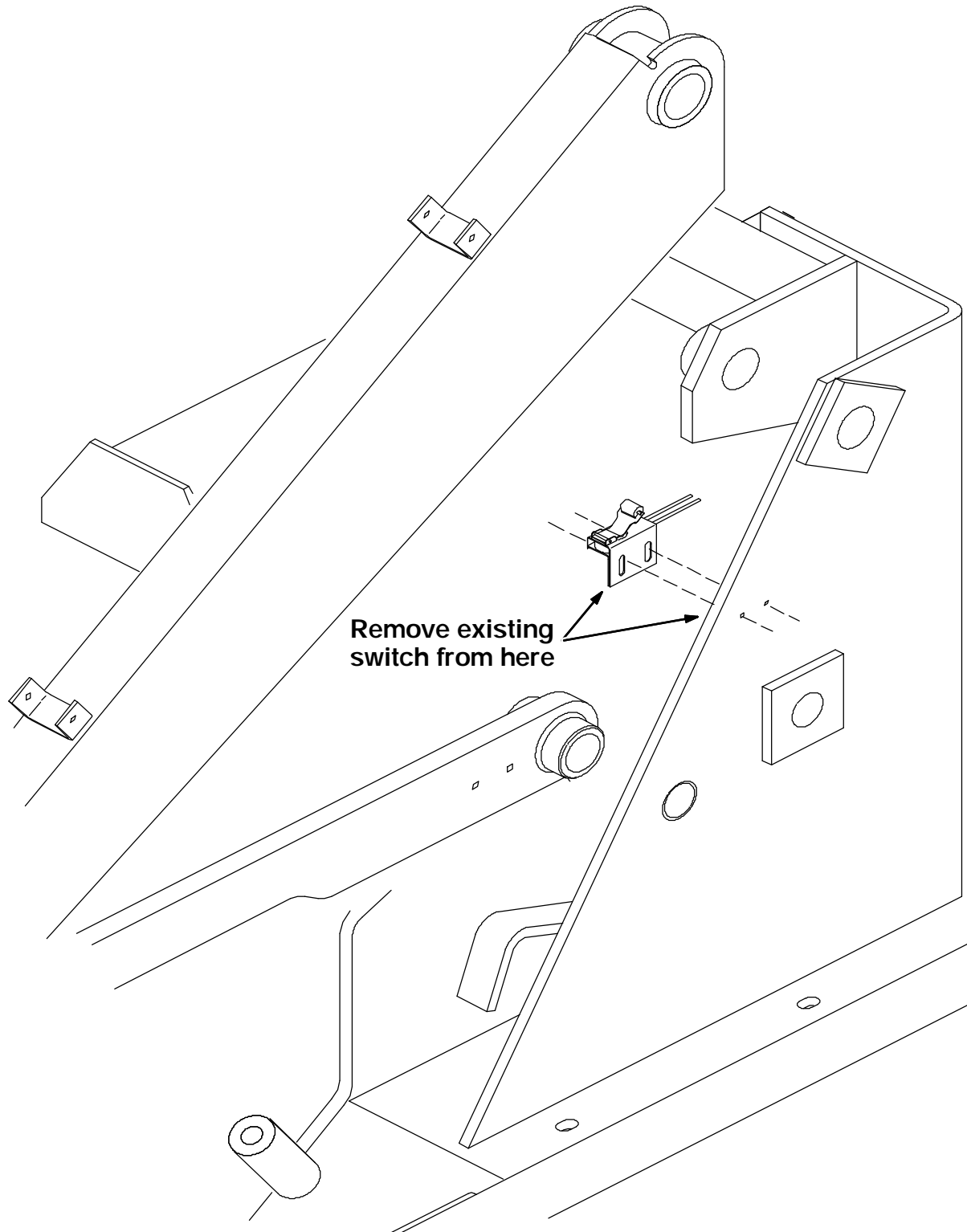


FIG. 1 - Existing Switch Assembly

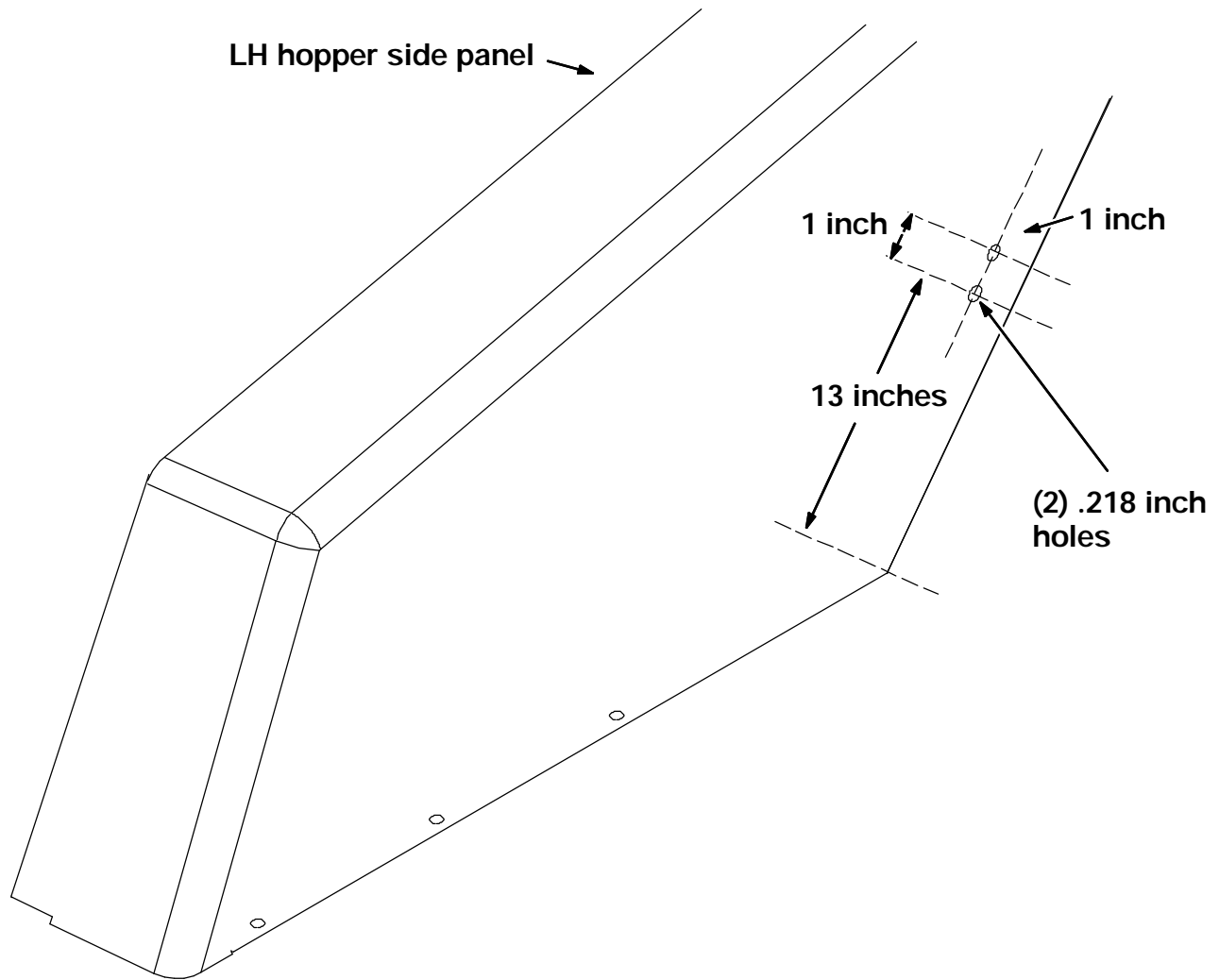


FIG. 2 - Switch Hole Location

BILL OF MATERIALS FOR HOPPER ROLLOUT SWITCH KIT 375574

Ref.	TENNANT Part No.	Description	Qty.
1	59965	Switch	1
2	375572	Bracket	1
3	375573	Harness	1
4	39650	Screw	2
5	27977	Flange nut	2
6	45181	Nyloc nut	2
7	19324	Flat washer	6
8	55248	Cable tie mount	3
9	49266	Cable tie	6

TENNANT COMPANY
P. O. Box 1452
Minneapolis, MN 55440-1452